

Boote 1851 | T. & R. Boote (& Co.) | Creamer or Cream Pitcher | Item | 002

Shape Name

[Boote 1851](#)

Potter Name

[Boote, T. & R. \(& Co.\)](#)

Photo Type

Item - Photo

Item

Creamer or Cream Pitcher

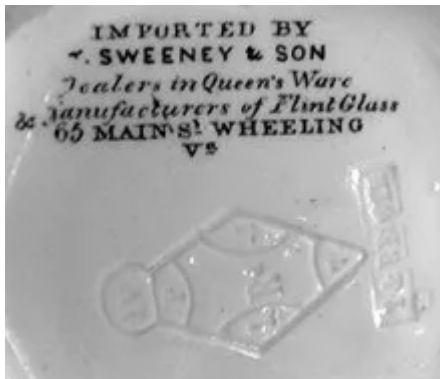


[Enlarge Image](#)

Associated Images



**Boote 1851 | T. & R. Boote (&
Co.) | Creamer or Cream
Pitcher | Mark | 003**



**Boote 1851 | T. & R. Boote (&
Co.) | Creamer or Cream
Pitcher | MarkImp | 001**