

Boote 1851 | T. & R. Boote (& Co.) | Teapot or Coffee Pot Base and Lid | Item | 003

Shape Name

[Boote 1851](#)

Potter Name

[Boote, T. & R. \(& Co.\)](#)

Photo Type

Item - Photo

Item

Teapot or Coffee Pot Base and Lid

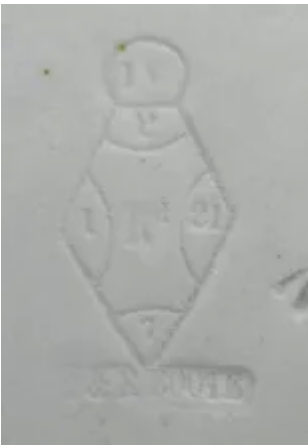
Kew Registration

[79753](#)



[Enlarge Image](#)

Associated Images



**Boote 1851 | T. & R. Boote (&
Co.) | Teapot or Coffee Pot Base
and Lid | Mark | 004**



**Boote 1851 | T. & R. Boote (&
Co.) | Teapot or Coffee Pot Base
and Lid | KewItem | 002**