

Asia Shape

Potter Shape Name: Asia Shape

Circa: 1850s

Shape Characteristics

Body serrated

Arch Leaf , Scroll Thumbprint

Handle C Shape with Thumb

Rest , Decorative Tab Handle

Finial

Split Pod Finial

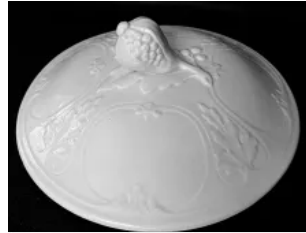


[Enlarge Image](#)

Associated Images



*George William Reade
Designer
Bleakhill
Burslem
Staffordshire*





Potters Who Made This Shape

*George William Reade
Designer
Bleakhill
Burslem
Staffordshire*

Reade, G. W. (Modeler)



Wooliscroft, G. (& Co.)



Hughes, Bennett, & Co.

Kew Registrations



Oct 29, 1855

 **preview**