

**Gothic | John Ridgway & Co. | Sauce or Soup  
Tureen Base, Lid, Underplate, and Ladle | Item |  
001**

**Shape Name**

Gothic

**Potter Name**

Ridgway, John & Co.

**Photo Type**

Item - Photo

**Item**

Sauce or Soup Tureen Base, Lid, Underplate and Ladle

**Kew Registration**

37420



[Enlarge Image](#)

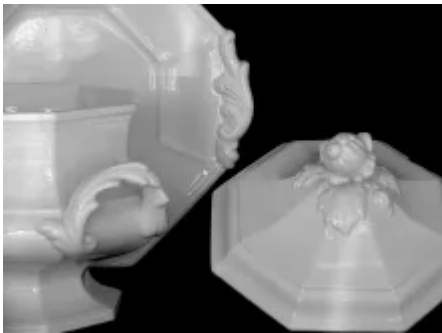
# Associated Images



**Gothic | John Ridgway & Co. |  
Sauce or Soup Tureen Base, Lid,  
Underplate, and Ladle | Item |  
005**



**Gothic | John Ridgway & Co. |  
Sauce or Soup Tureen Base and  
Underplate | Item | 001**



**Gothic | John Ridgway & Co. |  
Sauce or Soup Tureen Base, Lid,  
and Underplate | Item | 001**