

Framed Panels

Collector Shape Name: Framed Panels

Circa: 1850s

Shape Characteristics

Body
Arch Gooseberry

Handle
C-Shape with Thumb Rest

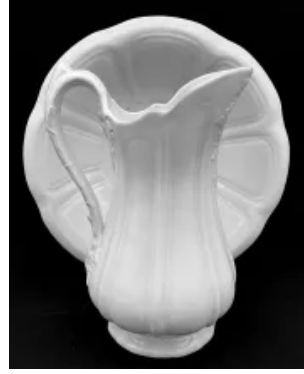
Finial
Berry Finial



[Enlarge Image](#)

Associated Images





Potters Who Made This Shape



Meigh, Charles & Son

Kew Drawings | Charles Meigh & Son



**Sauce or Soup Tureen
Base and Lid**



**Vegetable Tureen Base
and Lid**



Cup - Handled



**Plate - Various Sizes 4" to
10"**



**Teapot or Coffee Pot Base
and Lid**



**Pitcher - Table - Various
Sizes**

Kew Registrations

Tea Service



- Patent Registration # 106816 Date: July 24, 1855
- [No information on document image.]
- Framed Panels aka Arched Transit shape kepot, Chas. Meigh & Son, Hanley

Jul 24, 1855

 [preview](#)