

C. & W. K. Harvey

POTTERY LOCATIONS

Flint Street Works, Charles Street Works, Lane End

Start Year

1835

End Year

1843

Country

England

Stafford Street Works, Charles Street, Lane End

Start Year

1842

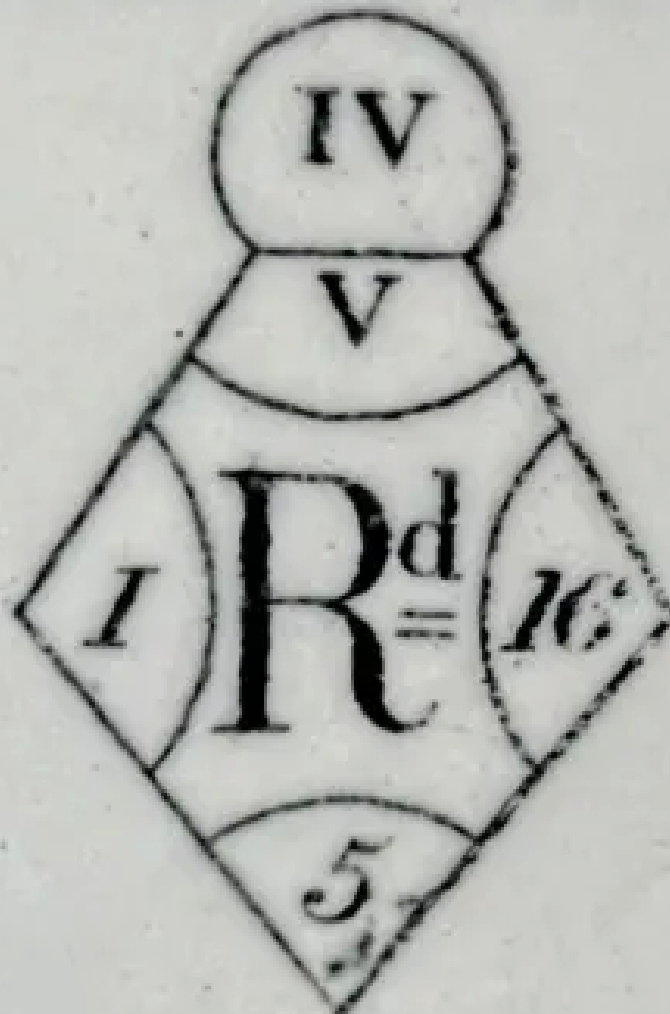
End Year

1852

Country

England

FLORENTINE.



C. & W. K. HARVEY

[Enlarge Image](#)

POTTER TRANSITIONS

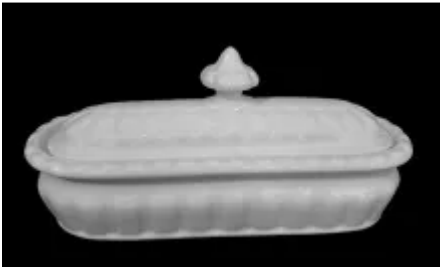
Former Potter Name: Hulme & Harvey

Years: From 1833 to 1834

Subsequent Potter Name: Holland & Green (Late Harvey)

Years: From 1853 to 1881

Related Shapes



Florentine



Gothic