

Prairie Shape

Potter Shape Name: Prairie Shape

Circa: 1860s

Shape Characteristics

Body
Poppy, Ribbon, Wheat & Hops

Handle
C-Shape with Thumb Rest
' Ring, Loop or Swirl Handle

Finial
Bud Finial



[Enlarge Image](#)

Associated Im







Potters Who Made This Shape



Clementson, Joseph



Clementson Bros.

Kew Registrations

Dinner Service



- Patent Registration # 146352 Date: November 15, 1861
- Joseph Clementson Harley Staffordshire
- Phebe Shupe dinner service

Nov 15, 1861

[Q preview](#)

Tea Service



- Patent Registration # 146353 Date: November 15, 1861
- Design for Tea Service
- Phebe Shupe tea service, J. Clementson, Harley

Nov 15, 1861

[Q preview](#)

Jug

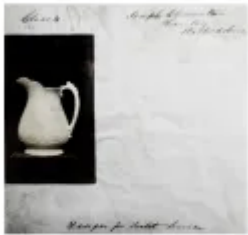


- Patent Registration # 146354 Date: November 15, 1861
- [No information on document image.]
- Phebe Shupe jug, J. Clementson, Harley

Nov 15, 1861

[Q preview](#)

Toilet Service



- Patent Registration # 152903 Date: July 4, 1862
- Joseph Clementson Harley Staffordshire, Design for Toilet Service
- Phebe Shupe toilet service oval

Jul 4, 1862

[Q preview](#)

Tea Service



- Patent Registration # 153112 Date: July 12, 1862
- Joseph Clementson Harley Staffordshire, Design for Tea Service
- Phebe Shupe tea service, Newport

Jul 12, 1862

[Q preview](#)

Tureen



- Patent Registration # 153336 Date: July 18, 1862
- [No information on document image.]
- Phebe Shupe soup tureen

Jul 19, 1862

[Q preview](#)