

Twin Leaves

Collector Shape Name: Twin Leaves

Circa: 1850s

Shape Characteristics

Body

Serrated Leaf ' Paneled Gothic

Handle

Branch and Vine Floral C-Shape with Thumb
Handle , Handle , Rest ,
C-Shape without Thumb
Rest ' Decorative Uplifted Handle

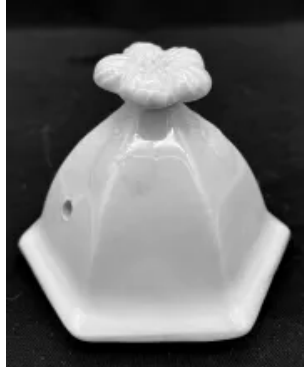
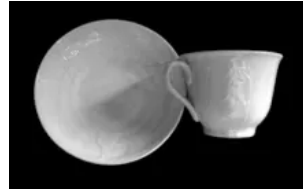
Finial

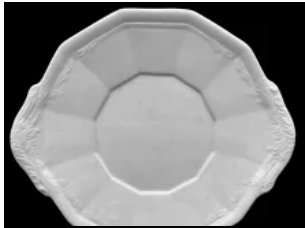
Stylized Flower
Finial ' Loop and Strap Finial



[Enlarge Image](#)

Associated Images







Potters Who Made This Shape



Edwards, James

Kew Drawings | James Edwards



**Sauce or Soup Tureen
Base, Lid, and Underplate**



**Vegetable Tureen Base
and Lid**



**Plate - Various Sizes 4" to
10"**

Kew Registrations

Tureen



- Patent Registration # 80815 Date: September 29, 1851
- [No information on document image.]
- Twin Leaves shape vegetable tureen, James Edwards Burdett

Sep 29, 1851

🔍 preview

Plate



- Patent Registration # 80816 Date: September 29, 1851
- Steel[patent]
- Twin Leaves shape plate, James Edwards, Burdett

Sep 29, 1851

🔍 preview

Tureen



- Patent Registration # 80826 Date: September 30, 1851
- James Edwards Dale Hill Pottery Longton Staffordshire
- Twin Leaves shape tureen, Burdett

Sep 30, 1851

🔍 preview